

**PINE BARK BEETLE**

**TRAPPING REPORT**

**UBC OKANAGAN CAMPUS GROUNDS**

Eric Haupt  
Forestry Consulting

November 27, 2014

## **UBC OKANAGAN PINE BEETLE TRAPPING REPORT – 2014**

Lindgren funnel traps were set up again this year as a pine bark beetle control measure to attract and collect western pine beetles (WPB) rather than have them attack ponderosa pine trees on UBCO campus property. Traps were previously used in 2006, 2007, 2008, 2010, 2011, 2012 and 2013.

Traps were set up with the purpose of attracting residual WPB in Campus trees as well as beetles flying onto UBCO Campus from surrounding properties. This report provides details and results of this years trapping program.

### **Trap Sites**

Ten clusters of three Lindgren funnel traps totaling thirty traps were set up at the same locations as the previous year. Refer to the attached map for site locations and site numbers.

### **Lures Used**

WPB lures were used in all thirty Lindgren funnel traps. Mountain pine beetle lures were previously tried but were ineffective so their use has been discontinued.

### **Placement and Removal Dates**

- May 7 Traps were set up at nine sites.
- May 9 Traps were set up at site 10 and lures placed in all traps.
- October 14 Traps were removed and placed in wooden storage boxes in the Quonset Maintenance Yard after the insects were collected.

### **Trap Monitoring and Insect Collections**

Traps were checked and insects collected on August 1 and October 14. It would have been beneficial to check the traps more often. The collected insects were dried if necessary, sorted and pine beetles counted. The attached table shows the sites, collection dates and the number of pine beetles counted.

### **Collection Comments**

The traps continue to be very effective. A total of 23,231 WPB and 0 red turpentine pine beetle (RTB) were collected. The numbers are down about 46 percent from the previous year and also below the numbers collected in all previous years since trapping started in 2006. The majority of the beetles (20,466) were in the August 1 collection and only a small number (2,765) in the October 14 collection. Comparison of the 2013 collection with collections in previous years is shown on the attached table.

### **Summary**

Pine beetle control using traps with WPB lures was a success with 23,231 western pine beetles and 0 red turpentine beetles collected which prevented a large number of pine trees from being attacked. Most of the beetles entered the traps prior to August 1 which probably indicates that there was a significant residual population that emerged from previously attacked trees that were not removed from the campus and neighboring

properties prior to beetle flights. The beetle population appears to be trending downward since this year collection numbers was the lowest since trapping commenced in 2006.

**Recommendations**

It is debatable as to whether or not current control programs need to be continued in view of the declining pine bark beetle populations. Since controls have not been taken on most of the neighboring properties it may be wise to carry on with the verbenone repellent placement and trapping for another year.

The pine beetle survey scheduled during January 2015 will provide current tree attack levels that will help determine the control measures that should be taken in 2015.

It would be very beneficial to encourage the neighboring property owners to remove their infested trees prior to beetle flights to reduce the threat to UBCO Campus trees.



Eric Haupt  
Forest Health Consultant

November 27, 2014

**UBCO PINE BEETLE CONTROL  
LINDGREN FUNNEL TRAP COLLECTIONS - 2014**

SITE	TRAP COLLECTION DATES				TOTAL	
	AUGUST 1		OCTOBER 14		WPB	RTB
	WPB	RTB	WPB	RTB		
1	358		24		382	
2	745		66		811	
3	726		76		802	
4	797		134		931	
5	2,496		419		2,915	
6	4,948		928		5,876	
7	2,354		497		2,851	
8	1,902		156		2,058	
9	1,753		193		1,946	
10	4,387		272		4,659	
<b>TOTALS</b>	<b>20,466</b>	<b>0</b>	<b>2,765</b>		<b>23,231</b>	<b>0</b>

**2012 Collection Summary**

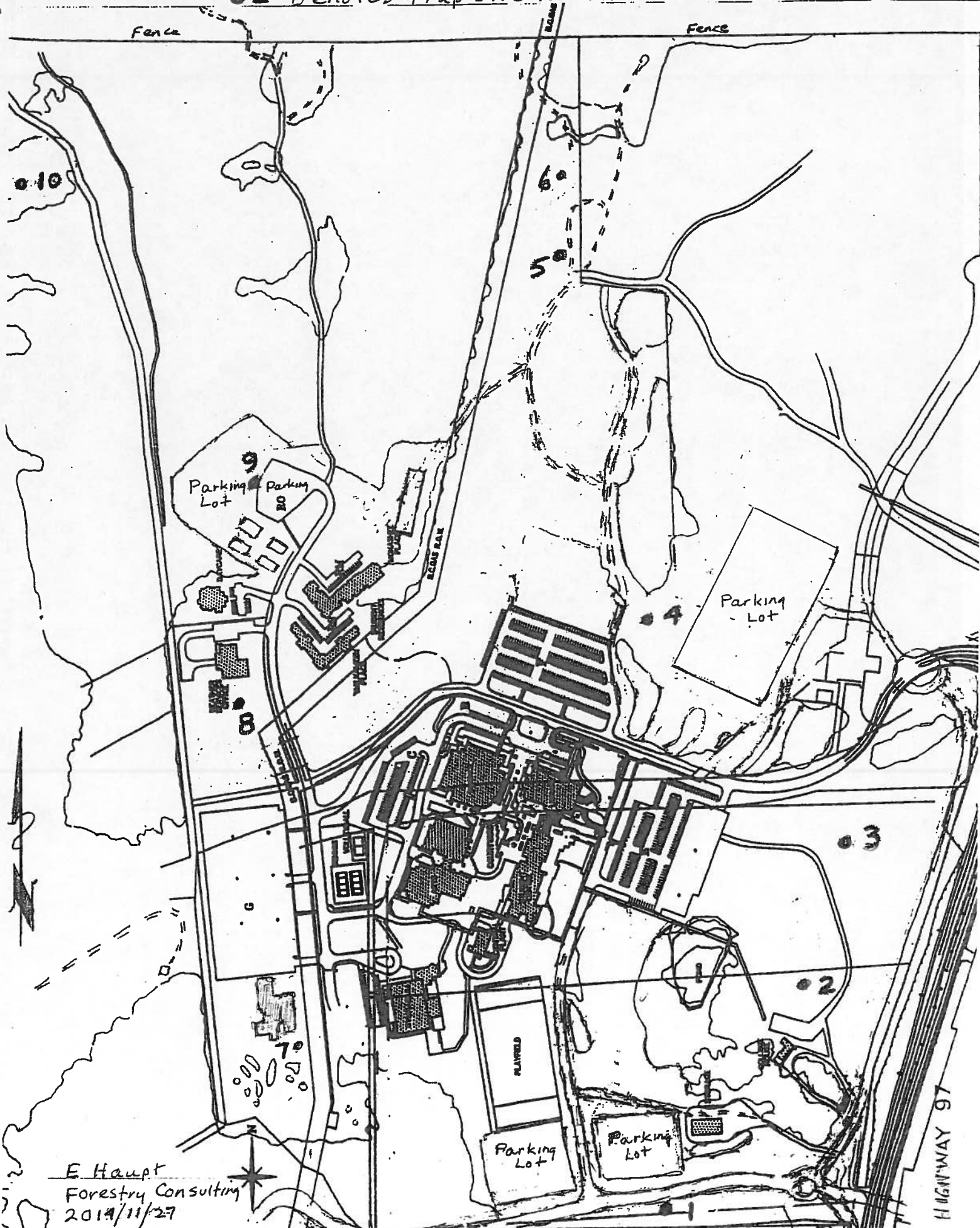
Western Pine Beetles (WPB)	23,231
Red Turpentine Beetles (RTB)	0
<b>Total</b>	<b>23,231</b>

**Collection Comparisons**

2014	23,231 (10 sites)
2013	42,912 (10 sites)
2012	75,560 (10 sites)
2011	48,324 (10 sites)
2010	41,022 (10 sites)
2008	38,644 (13 sites)
2007	31,499 (13 sites)
2006	28,079 ( 9 sites)

MAP OF 2014 UBCO PINE BEETLE TRAP SITES

● 2 - Denotes trap site location and site number



E. Haupt  
Forestry Consulting  
2014/11/27

HIGHWAY 97